



Company : Beach Petroleum Ltd

Well : Fermat-1

Interval : 815.00 - 2363.10 meters

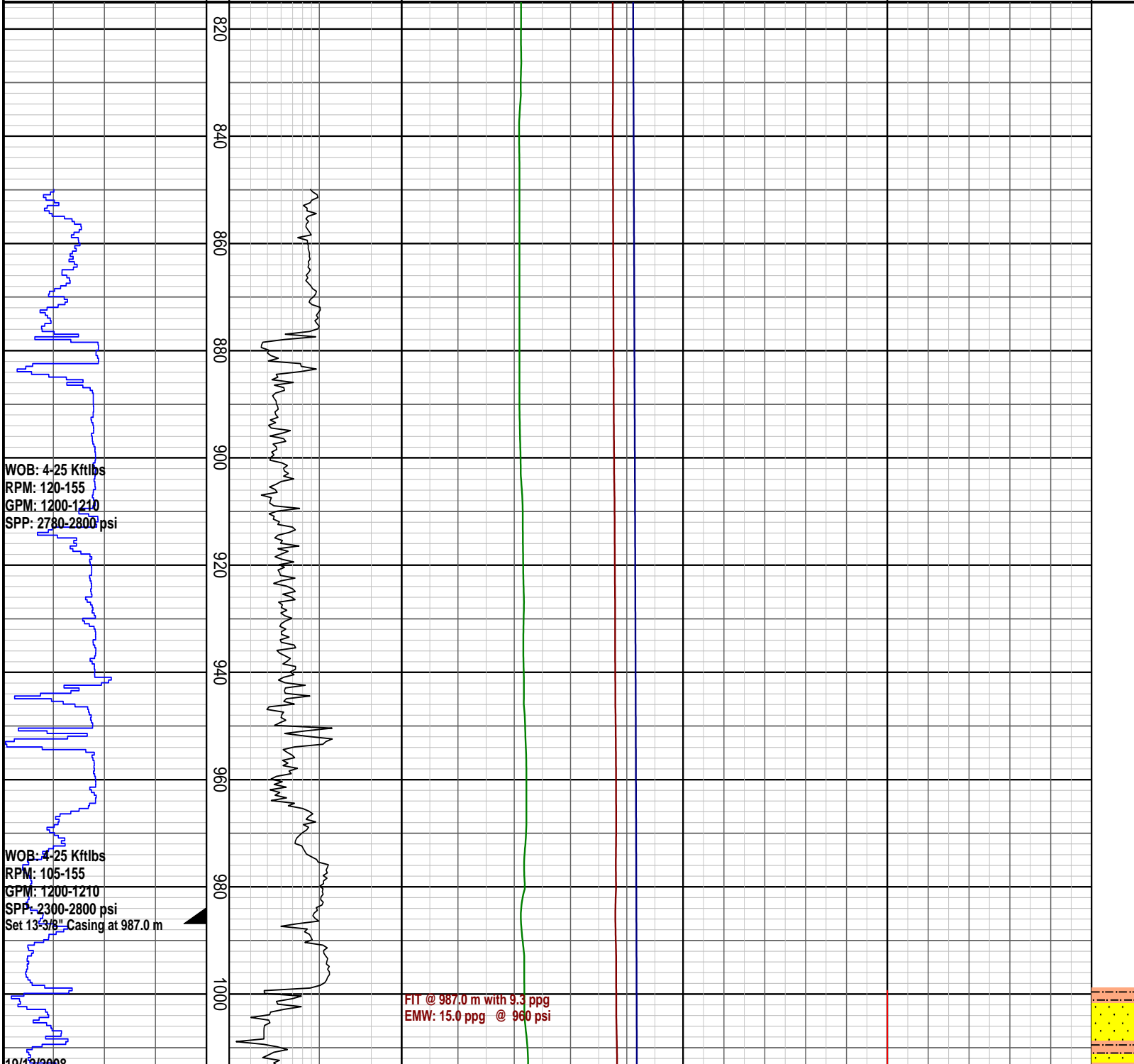
Created : 25/Dec/2008 6:10:38 AM



INTEQ

### PRESSURE DATA PLOT

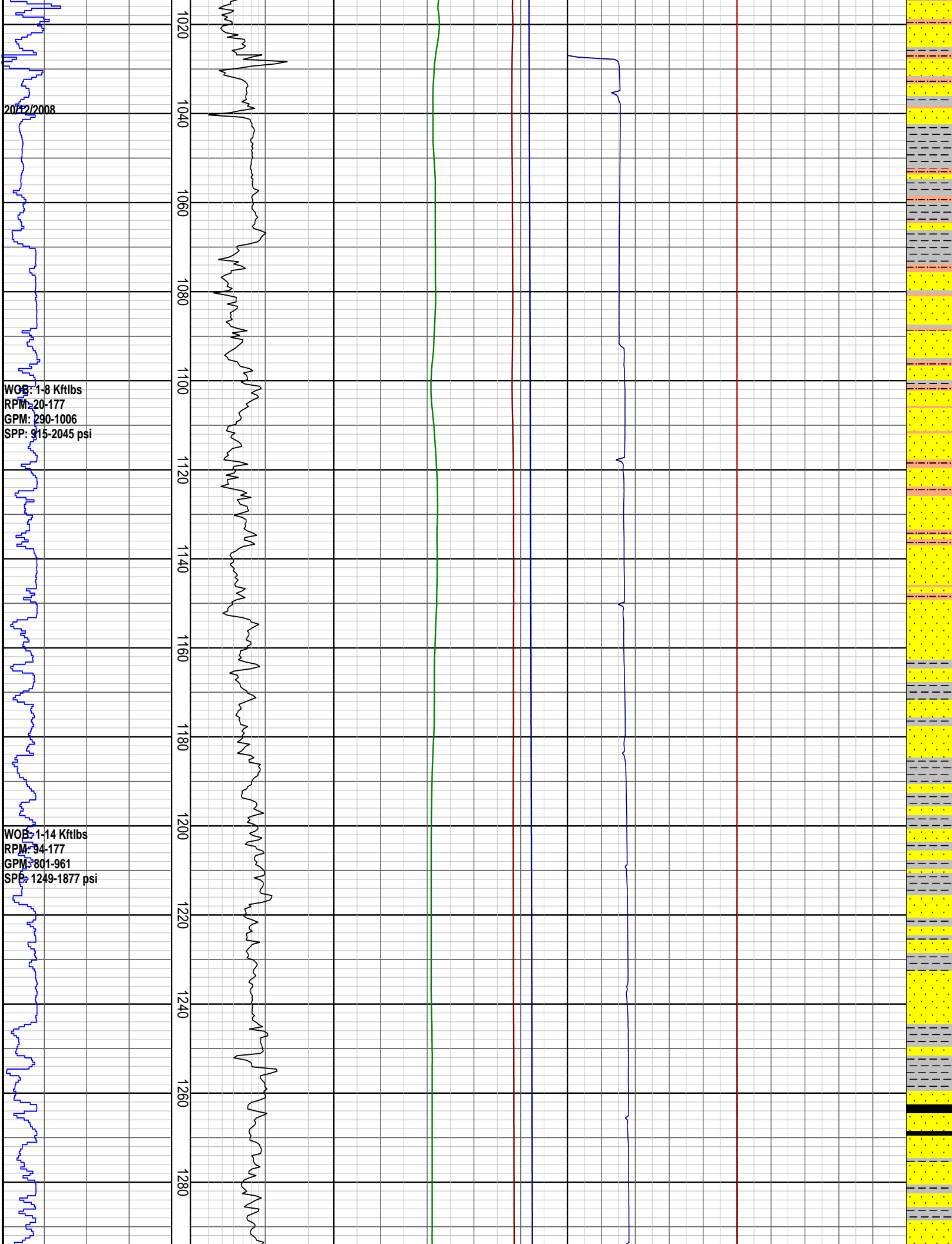
Rate of Penetration ROP 50   100   150   200 m/hr	DRILLING EXPONENT DXC 0.3   3	PRESSURE DATA Pore Pressure 4   8   12   16   20 ppg Fracture Pressure 4   8   12   16   20 ppg Overburden Gradient 4   8   12   16   20 ppg	TEMPERATURE Temperature Out 20   40   60   80   100 degC	GAS Total Gas 10   20   30   40   50 unit	INTERPRETED LITHOLOGY
------------------------------------------------------------	-------------------------------------	-------------------------------------------------------------------------------------------------------------------------------------------------------------------------	-------------------------------------------------------------------	----------------------------------------------------	--------------------------



WOB: 4-25 Kftlbs  
 RPM: 120-155  
 GPM: 1200-1210  
 SPP: 2780-2800 psi

WOB: 4-25 Kftlbs  
 RPM: 105-155  
 GPM: 1200-1210  
 SPP: 2300-2800 psi  
 Set 13-3/8" Casing at 987.0 m

FIT @ 987.0 m with 9.3 ppg  
 EMW: 15.0 ppg @ 960 psi

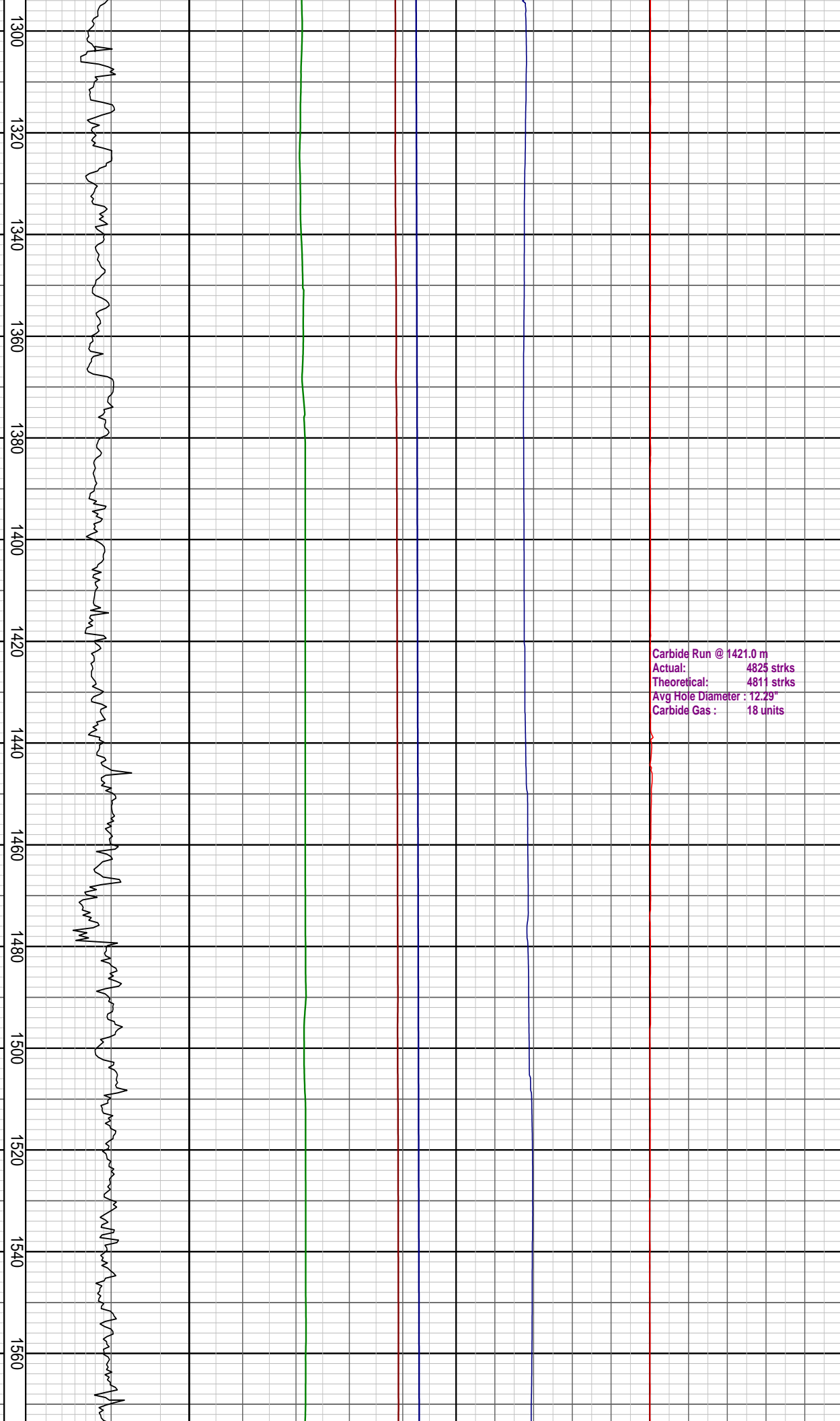


WOB: 2-17 Kftlbs  
RPM: 80-130  
GPM: 801-903  
SPP: 1358-1724 psi

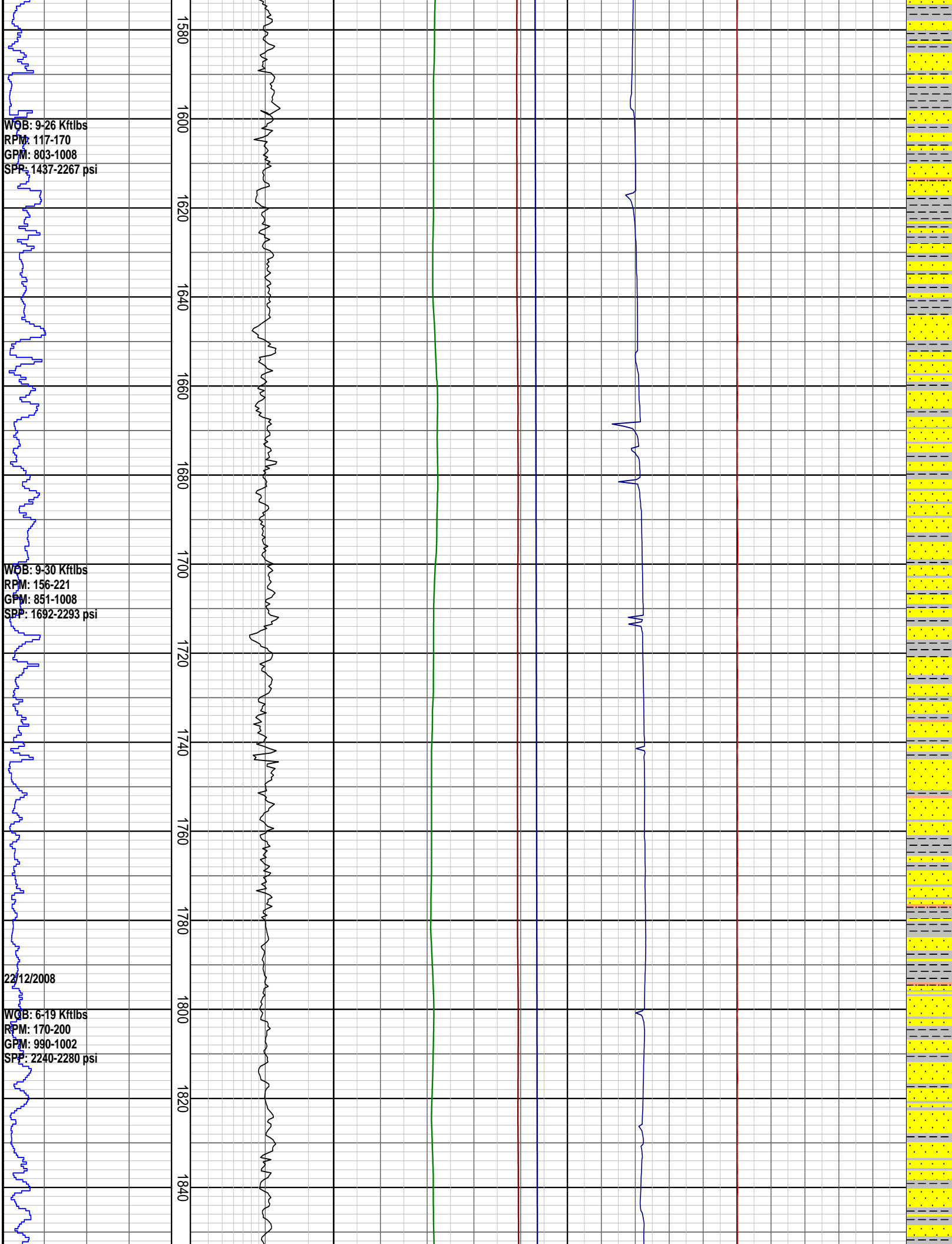
WOB: 4-18 Kftlbs  
RPM: 120-148  
GPM: 798-807  
SPP: 1445-1500 psi

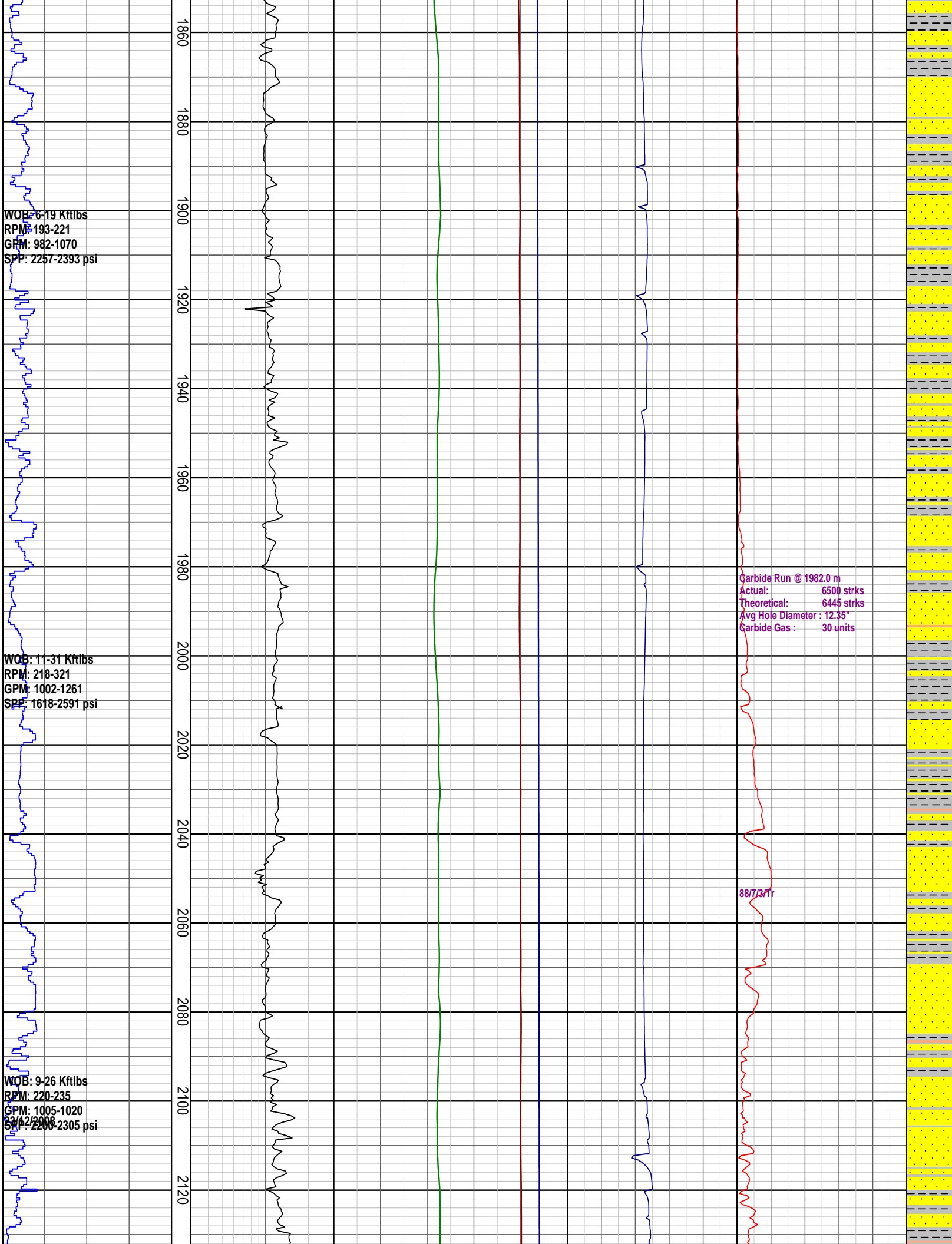
2/12/2008

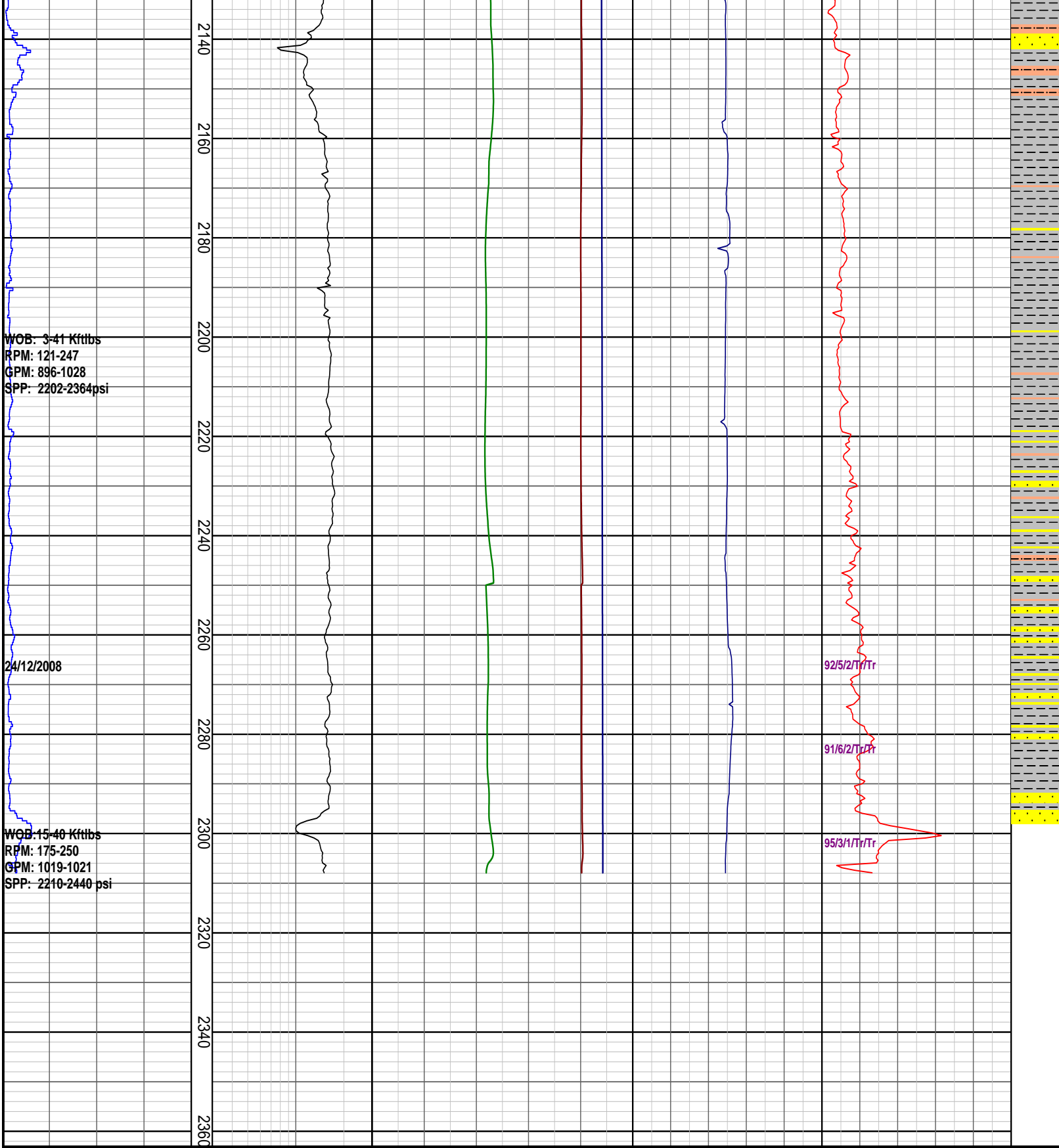
WOB: 1-18 Kftlbs  
RPM: 98-148  
GPM: 800-925  
SPP: 1470-1950 psi



Carbide Run @ 1421.0 m  
Actual: 4825 strks  
Theoretical: 4811 strks  
Avg Hole Diameter : 12.29"  
Carbide Gas : 18 units







**PRESSURE DATA PLOT**

<p><b>Rate of Penetration</b> <b>ROP</b></p> <p>50   100   150   200 m/hr</p>	<p><b>DRILLING EXPONENT</b> <b>DXC</b></p> <p>0.3   3</p>	<p><b>PRESSURE DATA</b> <b>Pore Pressure</b></p> <p>4   8   12   16   20 ppg</p>	<p><b>TEMPERATURE</b> <b>Temperature Out</b></p> <p>20   40   60   80   100 degC</p>	<p><b>GAS</b> <b>Total Gas</b></p> <p>10   20   30   40   50 unit</p>	<p><b>INTERPRETED LITHOLOGY</b></p>
<p><b>TVD meters 1:1000</b></p>		<p><b>Fracture Pressure</b></p> <p>4   8   12   16   20 ppg</p>			
		<p><b>Overburden Gradient</b></p> <p>4   8   12   16   20</p>			

